

MEDIA PACK



Moor House Research & Training Institute

part of Moor House School & College

At the forefront of global research
and training in the field of speech and
language disorders



ABOUT US

Pioneering work

Since it opened in 1947, Moor House has led the way in therapy and teaching methods for children with speech and language disorders.

Today, the specialist School and College makes a life changing difference to children and young people with speech and language disorders, including Developmental Language Disorder (DLD), with demand for places growing.

Through the work of our Research and Training Institute, Moor House continues to be at the forefront of global research and training in the field of speech and language disorders, taking the benefits of our work out more widely through published research, training courses and resources for professionals.



OUR TEAM

Available to provide expert insight and comment

Our specialist team, led by Dr Susan Ebbels, is available to provide expert insight and comment on a wide range of topics related to speech and language disorders from current research and evidence-based practice, to identifying and supporting children with language disorders.

Please see our profiles for further details, including the specialist topics each of our experts can speak on.

To arrange an interview with any member of our team, please contact:

James Skitt
Marketing & Communications Officer
skittj@moorhouseschool.co.uk
01883 719021 | 07841902338





DR SUSAN EBBELS

Director, Moor House Research & Training Institute, Moor House School & College

Specialist topics: *Developmental Language Disorder; Speech & Language interventions; research; The SHAPE CODING™ system*

Susan has worked at Moor House with children with Language Disorders, including Developmental Language Disorder (DLD) as a Highly Specialist Speech and Language Therapist for over 25 years.

Prior to this, she worked in mainstream and special schools, language units, nurseries and clinics both as a speech and language therapist and earlier as a speech and language therapy assistant. She has an honorary lectureship at UCL (where she completed her PhD in 2005) and was recently awarded a Fellowship by the Royal College of Speech and Language Therapists (RCSLT), to whom she is also a specialist advisor.

She is on the editorial boards of two peer reviewed journals, the International Journal of Language and Communication Disorders and Child Language Teaching and Therapy.

She is passionate about the need for evidence-based practice and has carried out, coordinated and published many intervention studies on a range of areas, but with a particular focus on improving the comprehension and production of grammar in children with language disorders using her SHAPE CODING™ system. She delivers regular courses both on the SHAPE CODING™ system and on the current evidence base for interventions for school-aged children with DLD.

Related links:

☎ 01883 719030

✉ @SusanEbbels

moorhouseinstitute.co.uk/research

moorhouseinstitute.co.uk/dld-training

moorhouseinstitute.co.uk/meet-the-team

shapecoding.com



LUCY HUGHES

**Research Speech & Language
Therapist, Moor House Research &
Training Institute, Moor House School
& College**

Specialist topics: *Developmental Language Disorder; Speech & Language Research; Conversation therapy*

Lucy is a Highly Specialist Speech and Language Therapist and is in the final stages of her PhD at UCL. Her doctoral research involves designing and trialling a new intervention for children with Developmental Language Disorder, which targets their everyday conversation skills.

Lucy was employed as a Research Associate on the Word Retrieval and Development (WoRD) project, a clinical research study which evaluated interventions for children with word-finding difficulties.

As a clinician, she has worked with children and their carers across mainstream and special schools, health centres and pre-school language units.

She is a regular guest lecturer at UCL, covering word finding and conversation analysis. Prior to retraining as an SLT, Lucy worked as a journalist and television producer, and completed an undergraduate degree in modern languages.

Related links:

☎ 01883 719035

✉ @hughes_slt

moorhouseinstitute.co.uk/research

moorhouseinstitute.co.uk/meet-the-team



DR NICOLA DAWSON

**Research Speech & Language
Therapist, Moor House Research &
Training Institute, Moor House School
& College**

Specialist topics: *Developmental Language Disorder; Speech & Language Research; Literacy interventions; Literacy and links to mental health*

Nicky works within the team to support and develop research on interventions for children and young people with DLD. She splits her time at the Institute with her role as Research Associate in the Department of Experimental Psychology at the University of Oxford, where she is working on a number of projects relating to children's language and literacy development.

Nicky qualified as a speech and language therapist in 2010 and worked in mainstream schools for 3 years with a varied caseload. She subsequently worked as a research assistant on a longitudinal project examining the relationship between reading and vocabulary in adolescents. She completed her PhD at Royal Holloway, University of London in 2019, and joined the University of Oxford as a postdoctoral researcher.

Nicky's research interests include morphology and the links between language and areas such as literacy and mental health, and she is looking forward to working with the team to develop evidence-based interventions to support children with DLD in these areas.

Related links:

moorhouseinstitute.co.uk/research

moorhouseinstitute.co.uk/meet-the-team



SUE MARR

Trainer, Moor House Research & Training Institute, Moor House School & College

Specialist topics: *Developmental Language Disorder (identifying the signs and strategies to support);*

An experienced teacher in both mainstream and SEN settings, Sue began her career in a mainstream school and in 1996 started working for the London Borough of Bromley as KS2 specialist teacher in both their language units.

It was here that she began supporting pupils with DLD. Sue worked closely with Speech & Language Therapists (SLTs) to deliver specialist language teaching and supported pupils' re-integration into mainstream classes.

In 2006, she joined the teaching staff at Moor House and has extensive experience of devising and delivering a mainstream curriculum that has been highly differentiated for the language needs of the pupils in her class. She has worked closely alongside speech and language therapists for many years to ensure that speech and language therapy can be integrated throughout the curriculum using a range of specialist systems.

In 2019, Sue was seconded to the Institute as a trainer to develop a range of courses for mainstream schools.

Related links:

moorhouseinstitute.co.uk/research

moorhouseinstitute.co.uk/meet-the-team

COULD IT BE LANGUAGE?

What is Developmental Language Disorder (DLD)

- Difficulty with expressive (speaking) and/or receptive (understanding) language
- Impacts on education and social interactions
- The difficulties exist without another biomedical condition, such as autism, or intellectual disability.

**2 children
in every
classroom
of 30**

HAVE DEVELOPMENTAL
LANGUAGE DISORDER



Norbury et
al., 2016

DLD affects an estimated

7.5%

of the population

DLD affects people around the world



no matter the language

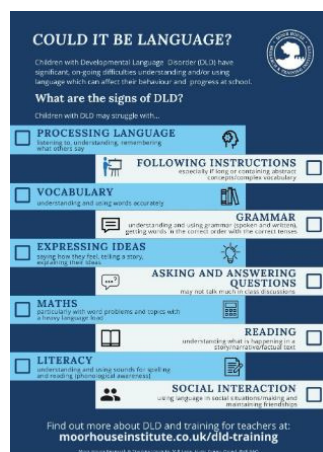
COULD IT BE LANGUAGE?

Raising Awareness of DLD

There is poor public awareness of DLD, reflected also in low rates of clinical identification and research on the condition.

At the Moor House Research & Training Institute, we aim to raise awareness of DLD, carry out and publish internationally recognised intervention research and develop and deliver high quality training courses.

Our flyers below help teachers (in blue) and parents (in green) to identify and support children with DLD.



Available to download at moorhouseinstitute.co.uk/dld-training



Mill Lane, Hurst Green,
Oxted, Surrey, RH8 9AQ

01883 712271

www.moorhouseinstitute.co.uk

@MHResTrain

Registered charity number 31187