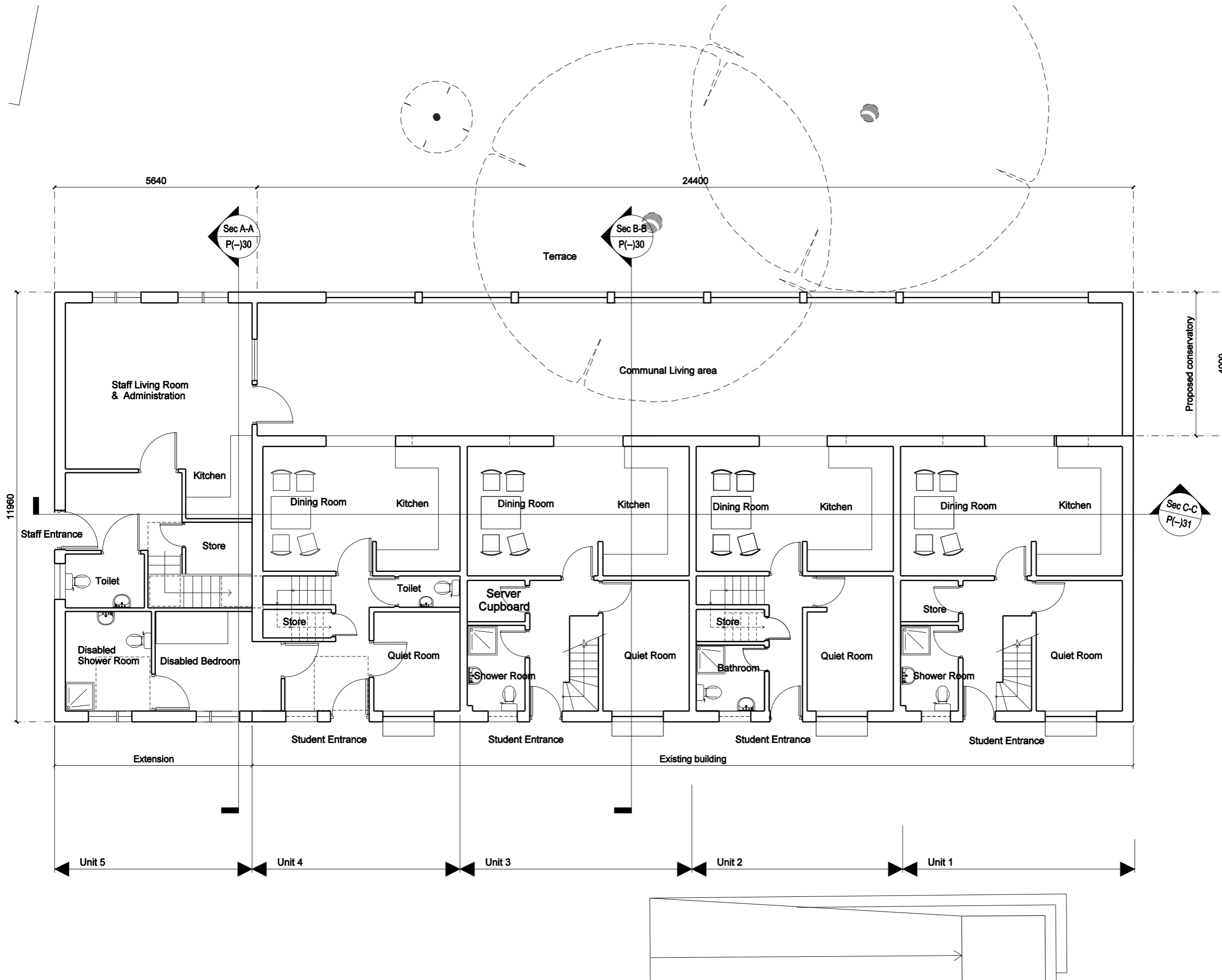


Dimensions are not to be scaled from this drawing.
 This drawing is based on current available information and should not be relied on as accurate measurements of usable space.
 This drawing is the property of the Colman Partnership Ltd. and Copyright is reserved by them. The drawing is issued on condition that it is not copied or disclosed by or to any unauthorised persons without the prior consent in writing of the Colman Partnership Ltd.

Revision	Notes	Date
A	Disabled bedroom & bathrooms added. Entrances, stairs and corridor changed in disabled access units.	04/02/11
B	Disabled bedroom & bathrooms relocated to extension. Combined admin and staff living room.	14/02/11
C	Adjustment of windows to suit elevations	21/02/11
D	New staircase to extension. Adjustment to disabled suite.	23/02/11
E	Disabled Access doors installed in Quiet room and Dining area.	23/02/11



PLANNING ISSUE



colman architects

Project
**Moor House School,
 Surrey,
 Sixth Form College**

Title
**Sixth Form Residential
 Proposed Ground Floor**

Scale 1:100 @ A3	Date 21/12/2010
Drawn by CC	Checked By Proj. Arch. Checked By Manager
Drawing No. 2940/P(-)25	Revision E

The Colman Partnership Limited
 27 Harcourt Street
 London
 W1H 4HP
 Telephone : 020 7535 2040
 Facsimile : 020 7535 2041
 email: projects@colmanarchitects.co.uk
www.colmanarchitects.co.uk
 CAD Filename: 011210_011210_011210_011210_011210