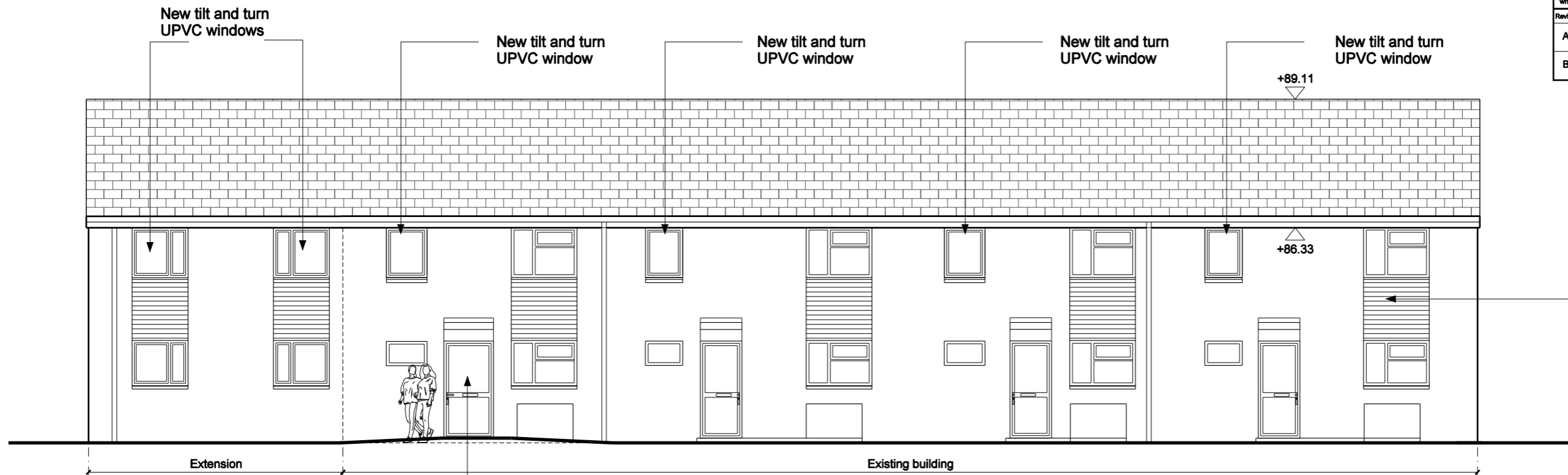


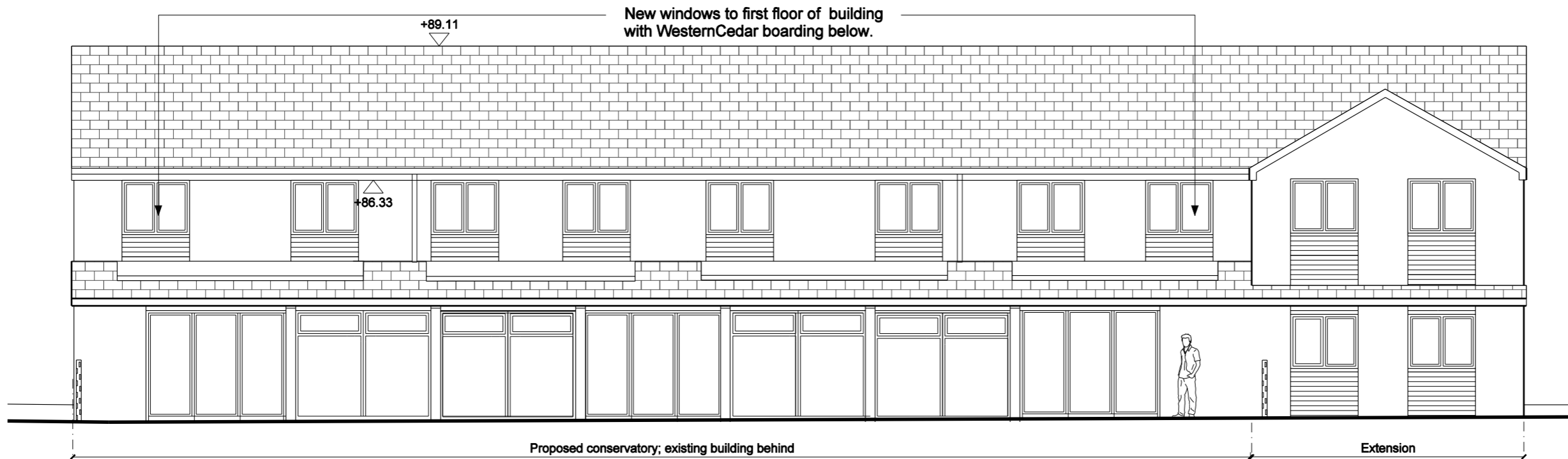
Dimensions are not to be scaled from this drawing.  
 This drawing is based on current available information and should not be relied on as accurate measurements of usable space.  
 This drawing is the property of the Colman Partnership Ltd. and Copyright is reserved by them. The drawing is issued on condition that it is not copied or disclosed by or to any unauthorised persons without the prior consent in writing of the Colman Partnership Ltd.

Revision	Notes	Date
A	Elevations amended to suit revised plans	18/02/11
B	Elevations slightly adjusted	23/02/11



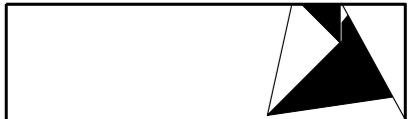
EAST ELEVATION

All white weatherboarding replaced with stained Western Cedar.



WEST ELEVATION

PLANNING ISSUE



colman architects

Project  
 Moor House School,  
 Surrey,  
 Sixth Form College

Title  
 Sixth Form Residential  
 Proposed East and West Elevation

Scale	Date
1:100 @ A3	12/01/2011
Drawn by CC	Checked By Manager
Checked by Proj. Arch.	
Drawing No. 2940/P(-)28	Revision B

The Colman Partnership Limited  
 27 Harcourt Street  
 London  
 W1H 4HP

Telephone: 020 7535 2040  
 Facsimile: 020 7535 2041  
 email: projects@colmanarchitects.co.uk

www.colmanarchitects.co.uk

CAD File name: \$FILES  
 \$DATES