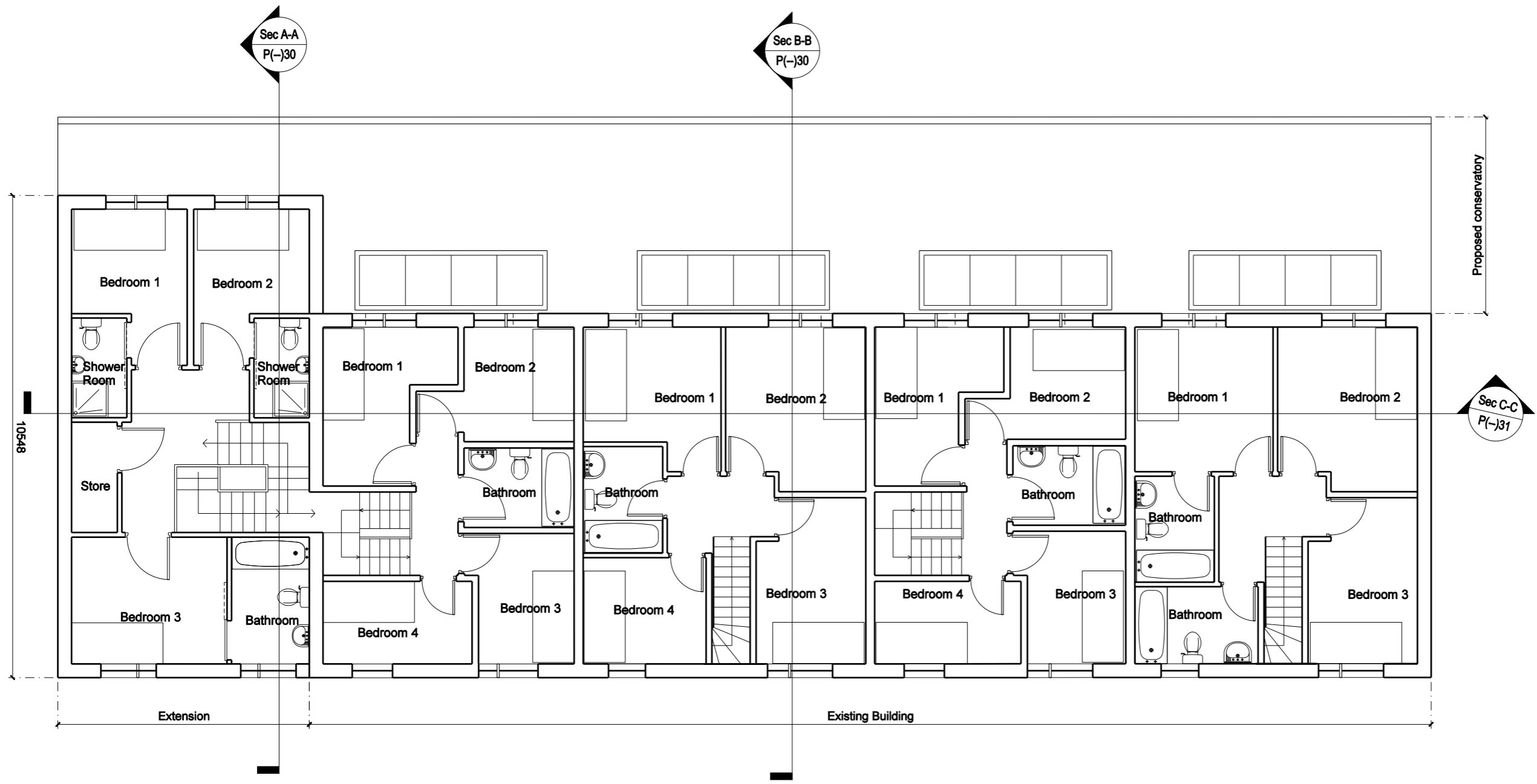


Dimensions are not to be scaled from this drawing.
 This drawing is based on current available information and should not be relied on as accurate measurements of usable space.
 This drawing is the property of the Colman Partnership Ltd. and Copyright is reserved by them. The drawing is issued on condition that it is not copied or disclosed by or to any unauthorized persons without the prior consent in writing of the Colman Partnership Ltd.

Revision	Note	Date
A	Internal bathrooms & staircases altered. Access to extension from Unit 4 provided	04/02/11
B	En-suite staff bedrooms. En-suite bathroom to Unit 1.	14/02/11
C	Windows adjusted to suit elevations	21/02/11
D	Staff Accommodation adjusted	23/02/11



PLANNING ISSUE

colman architects

Project
 Moor House School,
 Surrey,
 Sixth Form College

Title
 Sixth Form Residential
 Proposed First Floor

Scale 1:100 @ A3	Date 21/12/2010
Drawn by CC	Checked By Proj. Arch. Checked By Manager
Drawing No. 2940/P(-)26	Revision D

The Colman Partnership Limited
 27 Harcourt Street
 London
 W1H 4HP
 Telephone: 020 7535 2040
 Facsimile: 020 7535 2041
 email: projects@colmanarchitects.co.uk

www.colmanarchitects.co.uk

CAD Filename: SF1ES
 3047ES